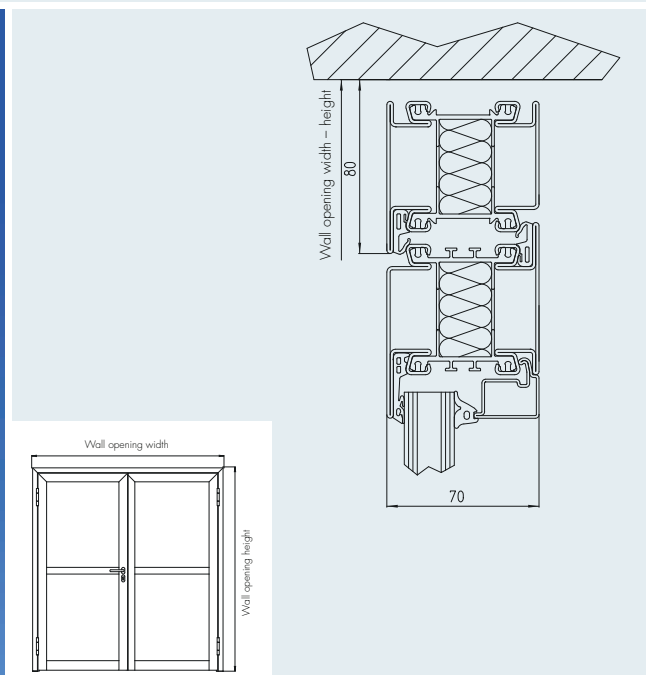


Profile door RTW1



Wall opening (width x height)

_____ x _____ mm

Standard dimensions

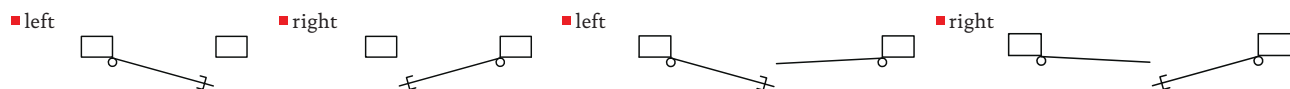
from: 500 x 500 mm
to: 2750 x 2750 mm
Other dimensions available on request.

Surface

- Ground
- Stainless steel bead blasted

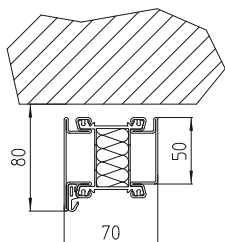
Other finishes available on request.

Opening direction



Frames

- Block frame (BZD) ³⁾



Description for use in tenders

Insulated frame profile door, model RTW1 / RTW2; profile depth 70 mm, fully sealed, made in extruded hollow profiles, 1.5 mm thick; thermal insulation composite bar; frame facing and transom with grooves for seals and glazing bars; with double sealing level; welded glazing bar connections, frame and leaf corners; insulation glass panes up to 42 mm/double-wall panels up to 42 mm; door design according to specifications; lock with stainless steel face plate, profile cylinder hole; stainless steel handle set; with 2 butt hinges for minimum friction. Optional: fire protection IE30, T30 and burglary protection up to RC 3

Material

- 1.4301 (AISI 304)
- 1.4401 (AISI 316 Ti) ¹⁾