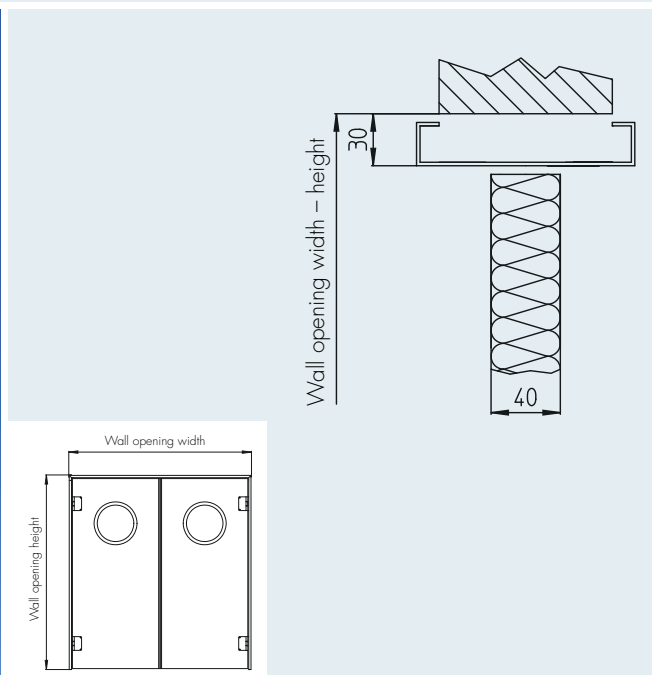




Swing doors PT1 / PT2



Wall opening (width x height)

Standard dimensions

_____ x _____ mm

from: 800 x 1800 mm
to: 2600 x 2600 mm

Other dimensions available on request.

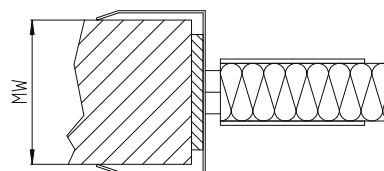
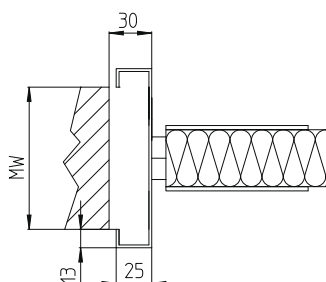
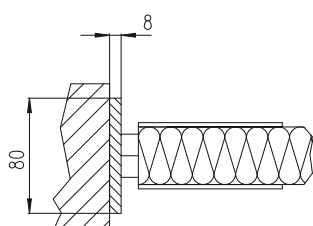
Surface

- Polished
- Stripe finish
- Circular brush finish

Other finishes available on request.

Frames

- Flush frame (FL) ³⁾
- Surrounding frame (UZ) ³⁾
- Cut-out frame (KLR) ⁴⁾



Description for use in tenders

Service room swing door PT1 / PT2, leaf 40 mm thick, fully sealed, double-wall construction in machine-straightened sheet steel, thickness 1.0 mm; with internal stainless steel stiffening profiles; rigid PUR HD foam insulation, CFC-free; self-closing with stainless steel spring hinges; with finger guard along entire door edge; without handle fittings; with clear acrylic glass sight window.

Material

- 1.4301 (AISI 304)
- 1.4571 (AISI 316 Ti) ¹⁾

¹⁾ hinges 1.4301 ²⁾ not suitable for outside doors ³⁾ Installation in masonry and concrete walls ⁴⁾ PU element installation