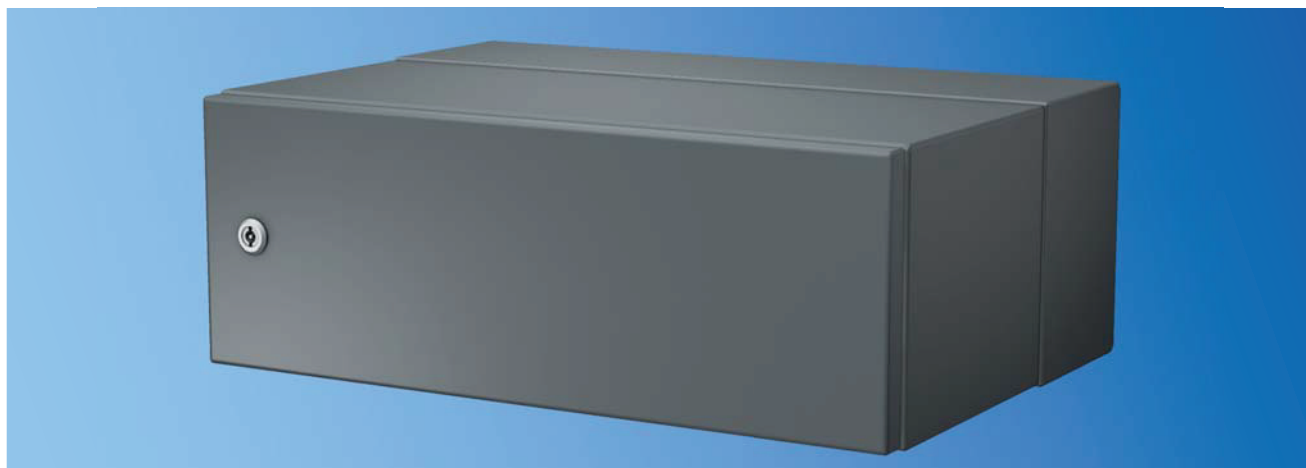


## Electronic control cabinet ESC



The electronic control cabinets are equipped with a 19" rack rail.

### Standard equipment

- Sheet metal thickness: Cabinet body 1.5 mm / door 2.0 mm
- Material: Made entirely from stainless steel  
Material 1.4301 (AISI 304)
- Surface: Polished (grain size 400)
- Hinges: 117° inside hinges
- Locking mechanism: Latch lock with 5 mm double bit insert
- Seal: Silicone profile gasket, 25 x 10, blue
- Right-hand door closure
- Mounting panel: S235 (St37) galvanised
- Protection class: IP 65
- with 19" rack rail
- Centre section can be swivelled out
- Housing and doors with earth bolts

### Equipment options

- |                        |                                  |                           |           |
|------------------------|----------------------------------|---------------------------|-----------|
| Stainless steel:       | ■ 1.4571 (AISI 316)              | ■ 1.4404 (AISI 316L)      |           |
| Surface:               | ■ Grain-blasted                  | ■ Grain size 240 polished | ■ Pickled |
| Latch lock mechanisms: | ■ Double bit 3 mm                |                           |           |
|                        | ■ Triangle 8 mm                  |                           |           |
|                        | ■ Square 8 mm                    |                           |           |
| Seal:                  | ■ Hollow section clamped profile |                           |           |
| Door closing:          | ■ left-hand                      |                           |           |
| Mounting panel:        | ■ Stainless steel                | ■ Aluminium               |           |
| Protection class:      | ■ IP 66                          | ■ IP 69 K                 |           |

### Accessory equipment

- Glass / Makrolon sight window
- Cable flange plate

### Customised features

- |                        |                                |            |
|------------------------|--------------------------------|------------|
| ■ Roof pitch           | ■ Roof overhang                | ■ Cut-outs |
| ■ Holes                | ■ Sheet metal thickness 2-3 mm |            |
| ■ Special requirements |                                |            |